

B721dn/B731dn/MPS5501 Option-Tray Maintenance Manual

071513A

Copyright Information

Copyright © 2013 by Oki Data. All Rights Reserved

Disclaimer

Every effort has been made to ensure that the information in this document is complete, accurate, and up-to-date. The manufacturer assumes no responsibility for the results of errors beyond its control. The manufacturer also cannot guarantee that changes in software and equipment made by other manufacturers and referred to in this guide will not affect the applicability of the information in it. Mention of software products manufactured by other companies does not necessarily constitute endorsement by the manufacturer.

While all reasonable efforts have been made to make this document as accurate and helpful as possible, we make no warranty of any kind, expressed or implied, as to the accuracy or completeness of the information contained herein.

The most up-to-date drivers and manuals are available from the web site:
<http://www.okiprintingsolutions.com>

PREFACE

This manual explains the maintenance methods of OptionTray unit optionally installed in the B721dn/B731dn/ES7131/MPS4900b/MPS5501b.

This manual is prepared for the maintenance person. In regard to the handling methods of B721dn/B731dn/ES7131/MPS4900b/MPS5501b, please refer to the User's Manual.

- Note!**
- The descriptions in this manual are subject to change without prior notice.
 - While all reasonable efforts have been made to make this document as accurate and helpful as possible, we make no warranty of any kind, expressed or implied, as to the accuracy of the information contained herein. Oki Data assumes no responsibility to the damages caused or claimed to have been caused by the user as a result of repair, adjustment and/or change using this manual.
 - Parts of this product are delicate and can be damaged unless properly handled. We strongly recommend the user to maintain the product at the hand of the registered maintenance person of our company
 - Before starting the maintenance work, please neutralize the static electricity.

1. REPLACEMENT OF PARTS

This chapter describes the procedures of the field replacement of parts, assemblies and units. The procedures are to detach them. Reverse the procedures to attach them.

The reference part numbers used in this manual (such as ① and ②) do not identical to the part numbers in the maintenance disassembly configuration diagram (45478901TL) and RSPL (45478901TR) for the manual.

1.1	Notes on replacement of parts.....	5
1.2	Part replacement procedure	7

1.1 Notes for Replacing of Parts

(1) Prior to replacing a part, unplug the AC cord and the interface cable.

(a) Be sure to use the following procedure to unplug the AC cord:

- ① Turn off the printer, then the LED indicator goes out.
- ② Pull out the AC plug of the AC cord from the AC power source.
- ③ Unplug the AC cord and the interface cable.



There is a risk of electric shock during replacement of the low voltage power supply. Use insulating gloves or avoid direct contact with any conducting part of the power supply, and caution should be exercised during replacement.

The capacitor may take one minute to complete discharge after the AC cord is unplugged. Also, there is a possibility that the capacitor doesn't discharge because of a breakage of the PCB, etc., so remember the possibility of electric shock to avoid electric shock.

(b) Always use the following procedure to reconnect the printer:

- ① Connect the AC cord and the interface cable to the printer.
- ② Connect the AC power cord insertion plug to the AC power source outlet.
- ③ Turn on the printer, then the LED indicator lights up.

(2) Do not disassemble it if the printer works normally.

(3) Disassemble it as required. Do not remove the part that is not shown in the replacement procedure.

(4) Please use the specified maintenance tool.

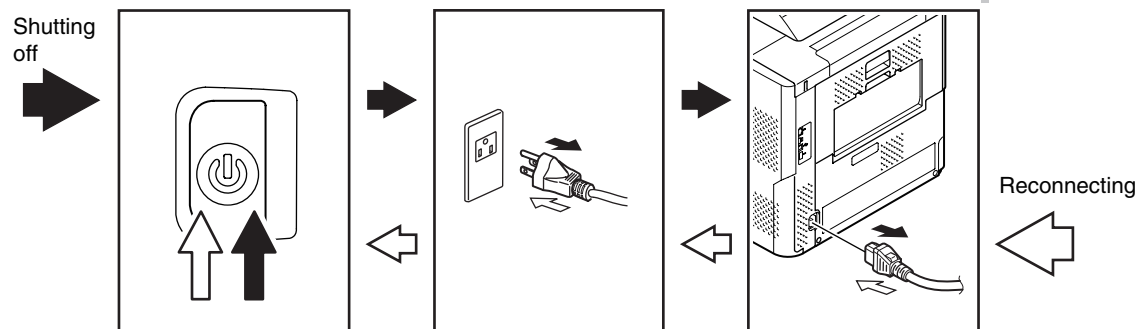
(5) Disassemble it according to the proper procedure. It may cause damage to the parts if disassemble it without following the proper procedure.

(6) As the small parts such as the screws are lost easily, please fix them to the original position temporarily.

(7) Do not use gloves that may cause static electricity easily when handling IC and the circuit board such as microprocessor, ROM, and RAM.

(8) Do not put the PCB on the device and the floor directly.



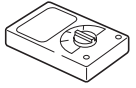
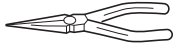
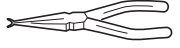
(9) Do not work for a long time with the printer with the top cover open, and an image drum unit installed in it.



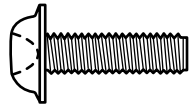
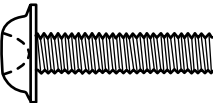
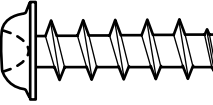
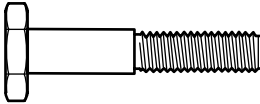
Maintenance Tools:

Table 1-1-1 shows the tools necessary to replace printed-circuit boards and units:

Table 1-1-1: Maintenance Tools

No.	Maintenance Tool	Q'ty	Use	Remarks
1	 No. 2-200 screwdriver with magnetic tip	1	3 to 5mm Screws	
2	 Screwdriver No. 3-100	1		
3	 Digital multimeter	1		
4	 Pliers	1		
5	 E-ring pliers	1	E-shaped ring removal	

Screws in use:

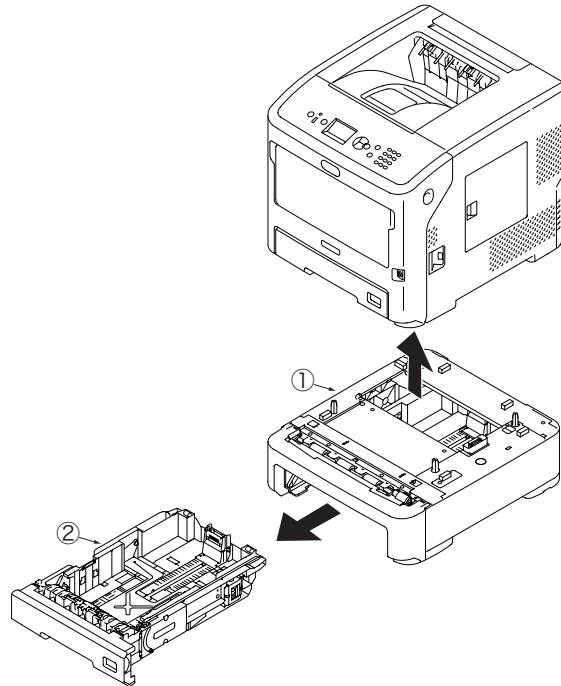
Shape	Designation
	Screw(silver)
	Screw(silver/8mm)
	Screw(black)
	Screw(shoulder)

1.2 Parts Replacement procedure

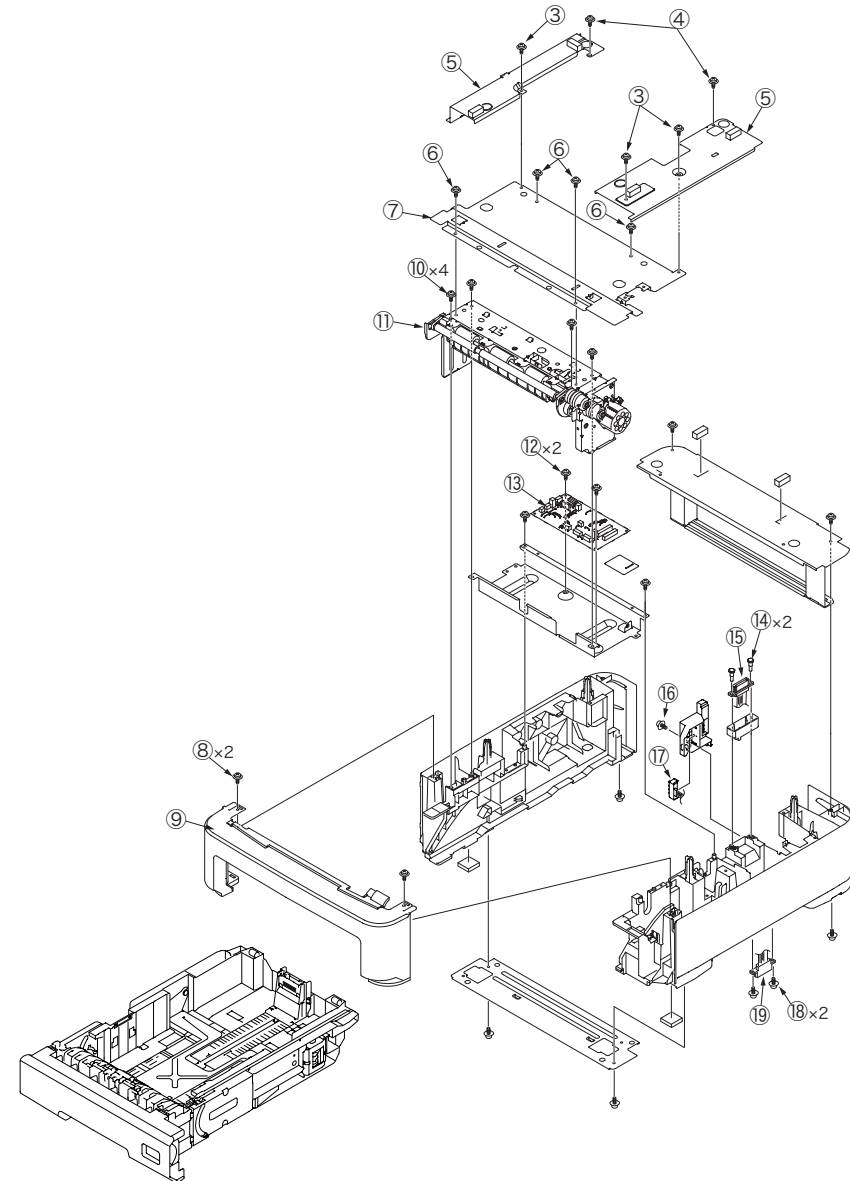
This Section contains the parts replacement for parts and assemblies.

1.2.1 Board-GOH-12 etc

- (1) Remove the Option Tray ① from the printer, and remove the cassette ② from the Option Tray Unit.

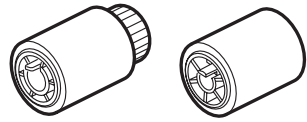


- (2) Remove the three screws (silver) ③ and the two screws (black) ④, and remove the Plate-Joint ⑤.
- (3) Remove the four screws (silver) ⑥ and remove the Plate-Top ⑦.
- (4) Remove the two screws (black) ⑧, and remove the Cover-Front ⑨.
- (5) Remove the four screws (black) ⑩, and remove the Hopping-Assy ⑪.
- (6) Remove the two screws (silver) ⑫, and remove the Board-GOH-12 ⑬.
- (7) Remove the two screws (shoulder) ⑭, and remove the Connector ⑮.
- (8) Remove the screw (black) ⑯, and remove the Switch ⑰.
- (9) Remove the two screws (black) ⑱, and remove the Connector ⑲.



1.2.2 Paper Feed Roller

In the hopping jam occurs frequently, to change the pickup roller and the separation roller.

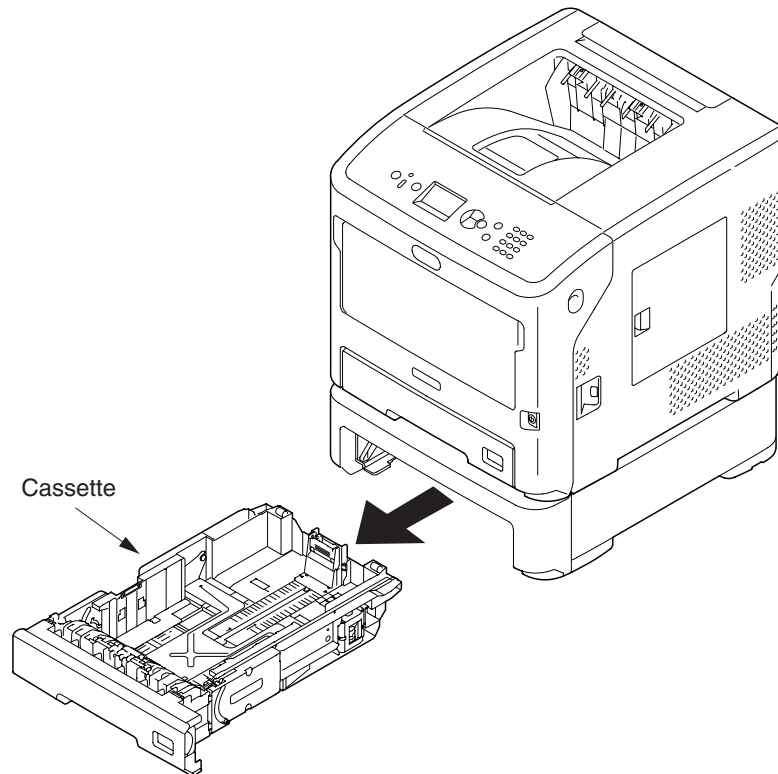


feed roller
(with gear)

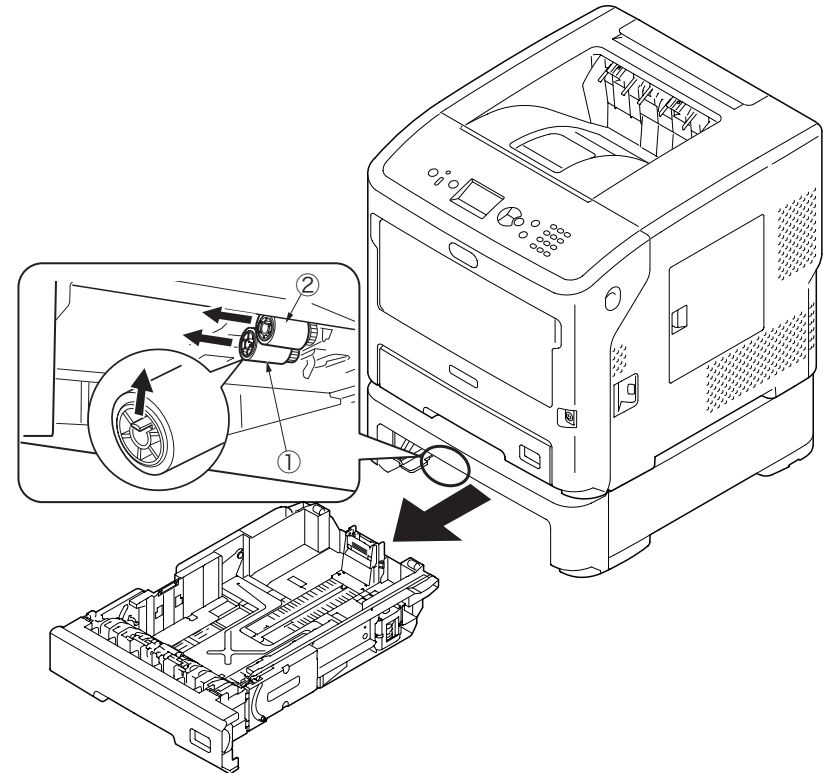
pickup roller
(without gear)

Note! Change all rollers at once.

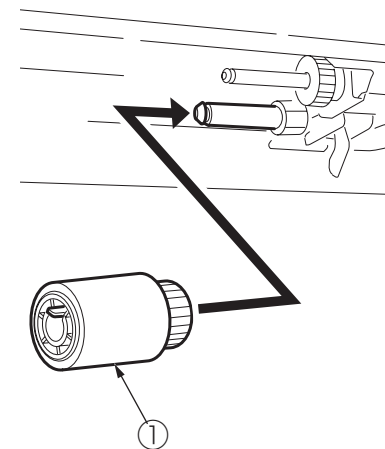
(1) Pull out the cassette after turning off the printer.



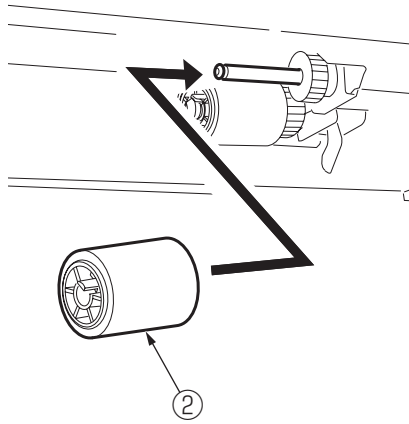
(2) Remove the rollers ①, ② while warping each latch.



(3) Set the new roller (with gear) ① to the shaft.



(4) Set the new roller (without gear) ② to the shaft.



Note! Check that the two rollers do not come off.

(5) Return the cassette to the main body.